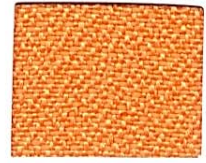


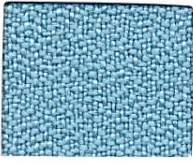
FESTIVAL

CONTINENTAL COLLECTION

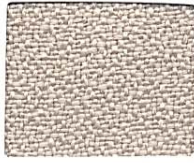
CON / FES / 001
2010 Series



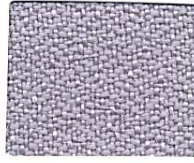
F-181 Dago Orange



F-102 Spearmint



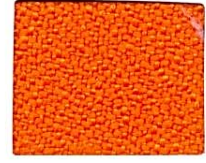
F- 188 Clouds



F- 216 Grey



F- 252 Ivory



F-256 New Orange



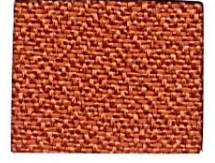
F-107 Peppermint



F- 122 Mink



F- 126 Granada



F- 205 Barbados



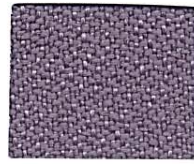
F-116 Bramble



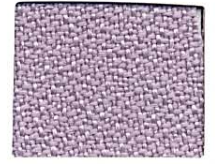
F-117 Forest



F- 202 Pebble



F- 192 Midgrey



F- 186 Amethyst



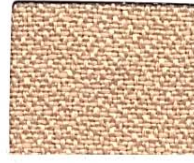
F-111 Cream



F-187 Pearl



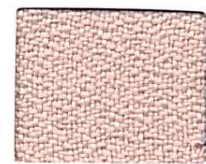
F- 150 Planet



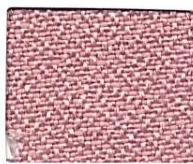
F- 215 Sand



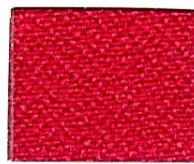
F- 156 Magenta



F-190 Shimmer



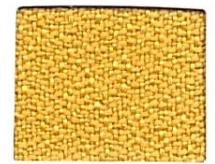
F-189 Peach



F- 123 Flame



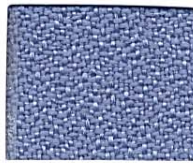
F- 132 Caramel



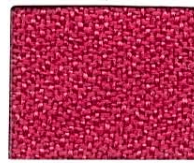
F- 151 Lemon



F-146 Brown



F-164 Corn flower



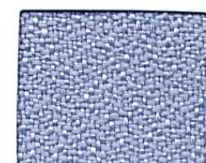
F- 131 Apollo



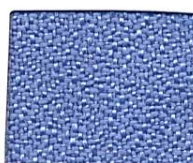
F- 148 Sangria



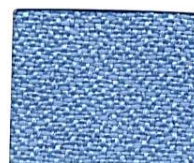
F- 152 Ruby



F-161 Dolphin



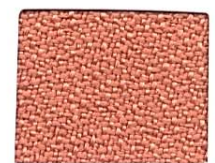
F-199 Sky



F- 200 Sea Blue



F- 108 Waterfall



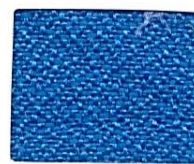
F- 145 Salmon



F-103 Lunar



F-191 Medblue



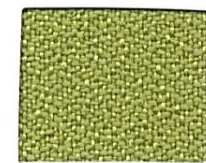
F- 129 Sapphire



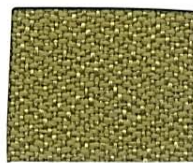
F- 157 Cinnamon



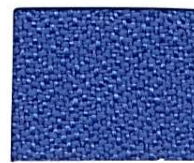
F- 174 Indigo



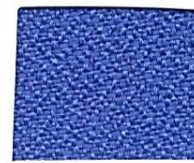
F-253 Oasis



F-254 Antigna



F- 169 Azure



F- 162 Electric



F- 137 Black

SPECIFICATION

COMPOSITION	:	100% Polyester
WEIGHT	:	300 Grams per square meter. 510 Grams per running meter.
Width	:	170 cm/650 +/- 2%
Flammability	:	BS 5651 PT2 = 1988 Spread of flame BS 5852 PT2 = 1988 Flame Propagation } On Request
Flammability performance is dependent on the combination of material used .		
Light fastness	:	5 + (BS1006(1990)
Fastness of rubbing :		wet : 5 dry : 4.5
Maintenance	:	professional cleaning is recommended
Colour matching	:	batch to batch variation in shade may occur within commercial tolerances. Sample cuttings from the current stock shades can be obtained on request
Availability	:	Ex - stock
Directionality	:	festival collection should be treated as directional fabric due to the light reflecting properties of polyester in a crepe weave construction . Care should be taken on application to establish shade variation in accordance with direction